



# TIDINGS

The Newsletter of Christ Church – St. Michael's Parish (Episcopal)

March 2010

## Ten Famous Hymns Written by Episcopalians (or Anglicans):

Many of us have a favorite Christian hymn from our childhood and, since 70% of Episcopalians were not born into the denomination, many of these hymns may be sung more commonly in a Methodist, Baptist or Congregational church. Nevertheless, Episcopalians do have some pretty good hymns and *The Episcopal Handbook* offers this as a “top ten” list of the most famous Episcopal hymns of all time:

10. “Come, my way, my truth, my life” (text George Herbert)
9. “I sing a song of the saints of God” (text: Lesbia Scott)
8. “O love of God, how strong and true” (text: Horatius Bonar)
7. “We know that Christ is raised” (tune: Charles Villiers Stanford)
6. “For all the saints” (tune: Ralph Vaughn Williams)
5. “O praise ye the Lord” (tune: Charles Hubert Hastings Parry)
4. “Praise my soul the king of heaven” (tune: John Goss)
3. “Hail thee, festival day” (tune: Ralph Vaughan Williams)
2. “The Church’s one foundation” (tune: Samuel Sebastian Wesley)
1. “Amazing grace” (text: John Newton)

--*The Episcopal Handbook*, Morehouse Publishing (New York: 2008)

## Fabulous Fish Fry Fiesta for El Hogar Friday, March 12<sup>th</sup>

First Seating: 5:00 – 6:00 PM  
Second Seating: 6:30 – 7:30 PM



Tickets: Adults, \$8 advance or \$10 at the door; Children, \$5

## Evensongs During Lent & Holy Week

**Sunday, March 7<sup>th</sup> at 5:00 PM**

***The Third Sunday in Lent:*** Join us for a special Lenten Evensong with the Chancel Choir as we continue our pilgrimages.

**Sunday, March 28<sup>th</sup> at 5:00 PM**

***Palm Sunday:*** In place of our April evensong, we offer a special evensong to begin Holy Week as we focus on Jesus’ triumphal arrival in Jerusalem.

## Holy Week Services

**Sunday, March 28<sup>th</sup>  
Palm Sunday**

- 8:00 AM Liturgy of the Palms,  
Holy Eucharist & Sermon
- 10:15 AM Liturgy of the Palms,  
Holy Eucharist & Sermon
- 5:00 PM Evensong

**Holy Monday, March 29<sup>th</sup>  
Holy Tuesday, March 30<sup>th</sup>  
Holy Wednesday, March 31<sup>st</sup>**

12:00 PM Holy Eucharist in the Chapel

**Thursday, April 1<sup>st</sup>  
Maundy Thursday**

- 6:00 PM Agape Meal – Etherton Hall
- 7:00 PM Maundy Thursday Liturgy
- 8:00 PM Vigil/Night Watch  
(*thru noon on Good Friday*)

**Friday, April 2<sup>nd</sup>  
Good Friday**

- 12:00 PM Good Friday Liturgy
- 5:00 PM The Stations of the Cross

**Saturday, April 3<sup>rd</sup>  
Holy Saturday & Easter Eve**

- 8:00 PM The Great Vigil and First  
Eucharist of Easter

**Sunday, April 4<sup>th</sup>  
Easter Day**

- TBD Sunrise Service at CBMM
- 8:00 AM Easter Eucharist & Sermon
- 9:30 AM Easter Family Eucharist with  
Children’s Homily & Choirs
- 10:30 AM *Easter Egg Hunt*
- 11:00 AM Festal Easter Eucharist with  
Sermon & Choir

*N.B. No Evensong on Sunday, April 4<sup>th</sup>*

**Christ Church – St. Michael’s Parish**  
**103 Willow Street, P.O. Box S**  
**St. Michaels, MD 21663**  
**Tel: 410-745-9076 Fax: 410-745-5760**  
**e-mail: [info@christstmichaels.org](mailto:info@christstmichaels.org)**

Office Hours: 9AM - 4PM

Weekly service schedule:

Morning Prayer – 9AM Mondays through Fridays

Holy Eucharist (Londonderry) – 1:30PM 1<sup>st</sup> and 3<sup>rd</sup> Thursdays

**Sunday Services: 8AM & 10:15AM**

Submissions to the *TIDINGS* monthly parish newsletter are due on the **10<sup>th</sup> of the previous month**

Please email items for publication to [kmliberatore42@yahoo.com](mailto:kmliberatore42@yahoo.com) or leave in newsletter editor’s mailbox located at the parish house

Editor: Kim Liberatore Stolz (410-745-6546)

## Various Important Needs, Various Strong Responses: Pastoral Care at Christ Church

The Blizzard of 2010, February Furry, Snowmageddon: whatever it was called, the weather that happened to Talbot County early last month delighted me. It snowed and snowed and snowed. I cross-country skied on the side streets of St. Michaels, I laughed with my daughter as she realized that she was not tall enough to play in the snow of our back yard, I baked bread, I shoveled and then when the sun returned I adored the brilliant brightness enhanced by the white of the snow. It felt as if God gave me a New England winter right here in the Mid-Atlantic for just one year—perfect! Sure, it was inconvenient in so many ways, but also it was wonderful in so many ways—at least for me. But it did not take long for me to realize that many people did not share my enthusiasm and instead found the weather to be depressing and even, at times, frightening. Similarly, I know from my life experience that there have been times when I have been troubled by circumstances that do not bother others. We are unique individuals with different reactions, feelings and needs. One trait we do share is that at some point in our lives we all encounter good times and bad times; companionship or support in attending to those joys and challenges is important. In the context of the church, we call this pastoral care.



At Christ Church, pastoral care takes many forms. First and foremost, our clergy have the privilege of visiting people wherever they are, for example: at the hospital, at Hospice House, in assisted living, or at home. Whether responding to a crisis or providing ongoing care for any reason, our clergy spend time with people. If you feel that there is a need that might not be met, please speak with one of us so that we can address your concerns.

Beyond traditional clergy visits, there is a great deal happening at Christ Church. Just look at the list in the bulletin and you will find: the Care Circle, Eucharistic Visitors, Flower Delivery, the Knitting Group, the Prayer Chain and Stephen Ministry. In each case lay people work together with the clergy to address all sorts of pastoral needs. The Care Circle provides tangible assistance in the form of transportation or meals. Eucharistic Visitors bring communion into the homes of those who are unable to get to church on Sundays. The Flower Delivery team, currently in transition, bears the task of delivering the altar flowers to parishioners who might need some extra cheer or who are celebrating a special occasion. The Knitting Group meets twice each month on Tuesday mornings for fellowship, and members create caring items like prayer shawls. The Prayer Chain is a group of people who meet monthly and promise to pray regularly for a special list of concerns. Stephen Ministers are trained to offer one on one care to individuals in crisis.

Still, there is more! Starting in February our newly formed Pastoral Care Team began meeting weekly. Martha Austin, Karen Burger, Bill Doherty, Jessie Weddle and Joan Zwemer met with me to go over the various pastoral needs of the parish and ensure that we are attending to everything as best we can. Also, we are beginning to make plans to reintroduce Pastoral Visitors: a group of volunteers who meet with parishioners for a friendly visit from time to time.

Pastoral needs in any parish and especially one as large and vibrant as Christ Church are varied and require various responses. What attends to the needs of one person will fall short for another, but then there will be something else that meets that need. Jesus calls each one of us to love and care for our neighbor. Your clergy take that charge seriously and I know that each one of you do as well. Pastoral Care in our community takes many forms and through them we support and strengthen one another as individuals and as a group. Together we create a caring community equipped to spread the Good News of Jesus Christ.

If you have questions about any aspect of pastoral care or wish to become involved, please contact me at [revabigail@christstmichaels.org](mailto:revabigail@christstmichaels.org) or (410-745-9076).

— Abigail Crozier Nestlehutt



## What Was Your Experience?

Last month—in the midst of the three feet of snow that fell over a six-day period—I was reminded of how perspective is dependant upon one’s particular experience. The night before the predicted winter storm, I went into the attic and retrieved Abigail’s and my cross-country skis, poles and boots. In the midst of Saturday’s snowfall, we took turns skiing and shoveling snow throughout the day—even skiing over to Christ Church to see the building in its snow-covered beauty. On Sunday morning, with 26” of fresh snow on the ground, we were plowed, shoveled and prepared for Sunday services where we welcomed a small, but hearty number of our parishioners. Our annual parish meeting was held as planned on Monday and the following morning we studied the weather radar as another winter storm approached bearing snow and freezing rain. Over the next eighteen hours, one foot of new snow came down and more cross-country skiing, snowball fights and shoveling followed. Throughout the six days, West Chestnut Street was bustling with activity as we traded back and forth our “street-owned” snow blower to keep sidewalks clear and to free trapped cars. While your experience may have been similar, others may have been “snowed-in” and trapped at the end of long driveways. Still others may have lost power and were having to worry about frozen pipes. In effect, our response to the snowstorm was dependent upon our own experience of it.

Similarly, how one reacted to the events on the day that Jesus was betrayed, condemned and executed on a cross was dependent upon one’s experience and knowledge of the earthly Jesus. Scholars estimate that, beyond Jesus’ immediate followers, a few hundred may have been following him at the time of his death. Of course, every lynching brings out a crowd, but the point is that for most residents of Jerusalem and Judea the crucifixion of Jesus of Nazareth was a non-event at the time. They had either not heard of him, or had chosen not to follow him. Nevertheless, for those who had given up everything to follow Jesus, his death was everything. It was the blackest day—a day without hope. We forget, at times, the rather obvious fact that, on the day of Jesus’ crucifixion, his death was experienced as a loss by very few people.

This month, we continue our journey through Lent. It is our time of fasting, prayer and self-examination. We move day by day through this season as we draw closer and closer to Holy Week and Easter Day. How we spend Lent and Holy Week shapes how we experience Easter and the resurrection.

At Christ Church, we offer a variety of programs to guide us through this spiritual pilgrimage of Lent. In addition to our special Sunday morning liturgies and Lenten quiet days, our Monday evening, Popcorn Theology program looks at the spiritual and ethical implications of certain films. On Tuesday evenings, the Covenant Churches Lenten series examines how our outreach efforts allow us to be God’s hands in the world. I encourage each of you to utilize these opportunities to have a meaningful and holy Lenten experience and to prepare yourselves for the renewal and new life that awaits each of us on the other side of this season.

— Mark Nestlehatt

### Baptisms, Weddings, Transferred In/Out, Funerals

Funeral: Arthur Jacob Koch, Jr.

## PARISH ANNOUNCEMENTS



### Maundy Thursday Watch – One Hour

On Maundy Thursday, April 1<sup>st</sup>, at the conclusion of the liturgy, the clergy, with the help of the altar guild, will remove or cover all visible signs of Christ's presence, leaving the church empty and barren, like a tomb, until the moment of Easter. During this process, we will move the reserved sacrament-consecrated bread and wine, and set up an altar of repose in the chapel. After the Maundy Thursday service, the church will remain open for parishioners to keep vigil just as Jesus commanded the disciples to stay awake while he prayed in the garden of Gethsemane.

Volunteers sign up for one-hour turns throughout the night and sit, pray or even fall asleep while contemplating this part of the journey. The watch concludes with the Good Friday liturgy. For your safety, paid security will be present during the overnight hours.

If you would like to participate in the watch by keeping vigil in the church for one hour between 8PM on Thursday and 12Noon on Good Friday, please contact Abigail at [revabigail@christstmichaels.org](mailto:revabigail@christstmichaels.org) or (410-745-9076).



### FANTASTIC, FUN, FABULOUS FISH FRY FIESTA!

Friday, March 12<sup>th</sup> 5-6:30PM or 6:30-7:30PM

\$10 per person, children under 10 \$5

**8\$ in advance—tickets available at the parish office!**

Our 2010 work team has formed and is busy preparing to travel to Tegucigalpa, Honduras to work with the people of El Hogar—The Home of Love and Hope. Since 2004, Christ Church has enjoyed a special relationship with this wonderful place that cares for boys and girls in Honduras. Once again, in order to raise money for the projects with which we will be asked to assist, we are throwing a fabulous party and we want you to be there.

So, mark your calendars, tell your friends, grab a neighbor and come to Etherton Hall on Friday, March 12<sup>th</sup> for the most Fantastic Fish Fry you can imagine!

### Maundy Thursday - April 1<sup>st</sup> Agape Meal 6PM Service in the Church 7PM

Sharing an agape meal on Maundy Thursday has become a wonderful Holy Week custom at Christ Church. During this sacred time, a festive feast is not appropriate but a simple meal of traditional foods shared family style together with blessings and readings reminds us of the last supper that Jesus shared with his friends. It is a wonderful time for fellowship and worship as we journey together to the cross. We hope that you will join us on Thursday, April 1<sup>st</sup>.

Fish for the meal will be provided. Participants are asked to bring offerings like cheese, olives, dried fruit and bread. Please plan to arrive between 5:30-5:45PM so that we are ready to sit down for dinner together at 6PM. Sign up sheets are available in the Parish House or you may phone the parish office (410-745-9076) to let us know that you will be there. If you have any questions or wish to lend a hand please contact Abigail at [revabigail@christstmichaels.org](mailto:revabigail@christstmichaels.org) or (410-745-9076).

## MORE PARISH ANNOUNCEMENTS ...



### Introducing Eco-Palms — Stewardship and Justice

As we do each year, on the Sunday of the Passion: Palm Sunday, March 28<sup>th</sup>, we will mark Jesus' triumphal entry into Jerusalem with a special procession around the church waving palms. This year we are purchasing our palms from a different supplier than usual—Eco-Palms. Their website tells us that Eco-palms are sustainably harvested and fairly traded. This means that our money directly benefits the communities where the palms are harvested.

Additionally, the palms are harvested in an environmentally friendly way that protects the forests in which they grow thereby ensuring that the palms we enjoy this year will be growing for years to come. One more thing: Eco-palms will look different than our usual palms. Instead of receiving a "strip", each person will receive a "frond." Many parishes around the country have made this change and priests with whom we have consulted remark that the palms are beautiful and the organization wonderful. Still, this is something different and we want you to be prepared. We are confident that you will appreciate the good stewardship of the environment and fair treatment of workers that Eco-palms represent and we believe that you will love the fronds that you receive.

### The Easter Vigil – Saturday, April 3<sup>rd</sup> at 8PM

This Easter, our Great Vigil will be a little different than in year's past. Yes, there will still be the great fire and the first Eucharist of Easter, but we will offer the Vigil as a partnership with both Trinity Cathedral and Christ Church in Easton. Trinity Cathedral will provide the choir and Dean Powell and Father Bill Ortt will be with us as well as parishioners from our Episcopal congregations in Easton. Plan to join us for this very special service.

### We Need Your Help to Grow Our Parish

As noted in the February *Tidings*, we desperately need to increase our staffing to meet present needs and would like to move our Assistant Rector, Mary Garner, from ¼ to ½ time by May of 2010. This requires an additional \$15,000 in pledges to make this wish a reality. If you are in a position to help us financially, please phone the Parish Office or let the treasurer know of your desire to make a new pledge or increase your current pledge for 2010.

### Blizzard of 2010 Photos



---

## GROUP & CLUB NEWS



### **Docent's Guild** - Linda Makosky

January 24, 2010, was not an ordinary Sunday at Christ Church. The founding of our parish on January 21, 1672, was celebrated with two historically accurate services based on the 1559 Book of Common Prayer. At the Sunday Adult Forum, the early history of Christ Church was presented by Jim McCloud and Bob Burger. Alice Cohee, a founder of the Docent's Guild, was recognized by the speakers for her meticulous historical research and writing of the booklet, "In the Beginning." Thanks to Alice's passion for history, we docents have readily accessible knowledge of our church's development. Bob Burger also noted Alice's lifelong membership and many contributions to the life of our church. A signed copy of "In the Beginning" was placed in the archives. The Forum audience gave Alice a well-deserved standing ovation.

Record snowfalls notwithstanding, Spring is just around the corner! The spring meeting of the Docent's Guild is scheduled for Saturday, March 20<sup>th</sup>, at 10AM in Etherton Hall. With a mug of tea or coffee in hand, we will make plans for the months ahead. Of primary importance is the Guild's need for one or two volunteers to prepare the duty schedules for the season. Thanks to our retiring schedulers, Faye Shannahan and Sue Kilmon, there is a system in place. The transition should be an easy one. What a wonderful way to get acquainted with fellow Guild members! An offer to serve would be deeply appreciated.

The spring meeting is a helpful introduction for anyone considering joining the Guild. There is a chance to ask questions and hear the comments of others. The responsibilities are light; only two hours for one afternoon a month on a day of your choosing, from May through October. Memorizing the church's history is not required; it's all in your Docent's Handbook. If you would like to get started right away, please call Lillian Watts (410-745-9999). Or just come to the meeting and introduce yourself.

---

### **Episcopal Church Women (ECW)**

All women of Christ Church are members of ECW and are encouraged to join in the monthly meetings and year round activities. It is an opportunity to form friendships while working to help meet the needs of others. By holding two Rummage sales, Fall & Spring, and a Christmas Bazaar, the ECW raises funds for outreach programs, such as Camp Wright, St. Michaels Community Center, El Hogar Ministries, Habitat for Humanity, Bay Hundred Youth Task Force, Children's Home Foundation, and many others. In addition, at Christmas, the ECW decorates an "angel tree" with gifts for needy children and brings plants to our shut-ins.

---

## CHRISTIAN FORMATION



### Christian Formation for Children and Youth – Lee Thomas

Snow storms certainly seem to have been a challenge this winter! In December, the annual Christmas pageant had to be postponed due to the storm on December 20<sup>th</sup>. In January, Youth Sunday on the 31<sup>st</sup> was challenged by another snow...and February started off with yet more winter weather. For Youth Sunday, the Church School children enjoyed making a colorful frontal for the altar and the Rite-13 youth baked cookies for the occasion. Despite the rather low attendance that day due to the frosty weather, Mason Roe delivered a very perceptive sermon with a wonderful message.



On February 7<sup>th</sup>, the Rite-13 youth had planned a “Souper Bowl Sunday” collection for donations for relief work in Haiti, but again the weather was a factor and the collection was postponed to later in the month. We look forward to March and the Season of Lent – and the coming of Spring!! Peace, Love and Joy!!

### Retreat: April 27<sup>th</sup> – 30<sup>th</sup> – Jim McCloud

Come join us on retreat - after the snows of winter, after Easter, after the craziness of the Spring rummage sale - you need a break. Discover the peace of a retreat, April 27<sup>th</sup> – 30<sup>th</sup>, in the beautiful Hudson River Valley.

And what does a retreat offer? The opportunity to experience your faith in a new and deeply spiritual way, the fellowship of Christ Church and other retreatants, facilitated discussions, participation in the rhythm of prayer in a monastic community, quiet time, hearty meals, comfortable accommodations, all in a beautiful setting on the Hudson River in West Park, NY.

We need to have a minimum of 7 and plan a maximum of 12, so if this sounds appealing, please let either Abigail ([revabigail@christstmichaels.org](mailto:revabigail@christstmichaels.org)) or Jim McCloud ([jasmccloud@me.com](mailto:jasmccloud@me.com)) know of your interest and we'll provide details on cost, transportation, and anything else you need to make a decision. There will be an organizational and planning meeting on March 21<sup>st</sup> at 1PM in Lea Library. To learn more about Holy Cross Monastery, visit their web-site at: [www.holycrossmonastery.com](http://www.holycrossmonastery.com)

### Covenant Churches Lenten Series 2010 - Faith in Action

Join us on Tuesday evenings during Lent as we gather with other Bay Hundred Area people of faith for fellowship and a program focused on outreach. Dinner begins at 6PM and is followed by a program at 7PM.

The remaining dates are as follows:

- |                          |  |
|--------------------------|--|
| March 2 <sup>nd</sup> :  | Union United Methodist Church: “St. Michaels Community Center”--Trisha Payne     |
| March 9 <sup>th</sup> :  | Royal Oak Community Church: “Saving Lives in Africa” Rear Adm. Tim Ziemer (Ret.) |
| March 16 <sup>th</sup> : | New St. John's UMC: “Education Initiatives”-- Pam Clay                           |
| March 23 <sup>rd</sup> : | St. Luke's UMC: Prison Ministry--Joy and Bill Cruikshank                         |

## CHRISTIAN FORMATION CONTINUED



### Popcorn Theology: Mondays During Lent

Movies begin promptly at 7PM. Popcorn and soda will be provided. Please feel free to bring your own alternative beverages. This Lent's genre of films is "Australian Films" and includes the following:



#### Monday, March 1<sup>st</sup>

**The Tracker (2004)** - The mountainous country of Southern Australia in 1922 is the setting for this tale about a mysterious tracker of aboriginal descent who must find a fugitive on the run, with three mounted white policemen following closely behind. Moving farther into the wilderness, the journey grows increasingly harsh on the travelers; as the lines between black and white become blurred, unexpected violence and betrayal await them at every turn. *(Not Rated)*.



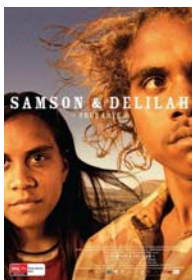
#### Monday, March 8<sup>th</sup>

**Rabbit-Proof Fence (2002)** - Australia's aboriginal integration program of the 1930s broke countless hearts -- among them, those of young Molly, Gracie and Daisy, who were torn from their families and placed in an abusive orphanage. Without food or water, the girls resolve to make the 1,500-mile trek home. Meanwhile, a well-intentioned tracker is trying to return the girls to the authorities. *(PG)*



#### Monday, March 15<sup>th</sup>

**The December Boys (2007)** - Daniel Radcliffe, of Harry Potter fame, stars in this drama set in the Australian outback during the 1960s. After living together for years at a Catholic orphanage, four teenage boys all born in December must face the likelihood of not being adopted. But while on vacation at a seaside resort, the boys become rivals as they compete for the affections of two prospective parents, a situation that ultimately teaches them the true meaning of family. *(PG)*



#### Monday, March 22<sup>nd</sup>

**Samson & Delilah (2009)** - In the desert of Central Australia, aimless Samson takes a fancy to Delilah, a fellow teen who takes care of her grandmother. Branded as outcasts by the rest of the community, Samson and Delilah set out for Alice Springs on a grueling road trip. The epic journey subjects the aboriginal duo to poverty, addiction and hunger in a sparse and grittily beautiful feature debut. *(Not Rated)*

## REACHING OUT



### **Habitat Project Groundbreaking To Take Place March 13<sup>th</sup>** – John Hunnicutt

#### ***St. Michaels Faith Build led by Christ Church sets ambitious goal***

Volunteers from Christ Church and their partners from St. Luke's Methodist Church and Union United Methodist Church will join their clergy on the morning of March 13<sup>th</sup> to put shovels in the ground and formally begin the construction of a Habitat home.

The goal is to complete the affordable, energy and environmentally efficient home on Brooks Lane by this fall. Construction plans call for work on Tuesdays and Saturdays.

Working schedules for the churches' construction teams are being prepared and the teams of volunteers who will take hammer and nail in hand, act as assistants and helpers to the skilled volunteers or provide food and morale support are being organized. Unfortunately, the winter storms forced postponement of an orientation meeting for the volunteers.

It will never be too late to join in the effort. Contact Pamela McCloud, Allison Sanford or John Hunnicutt.

### **Ask, Search, Find: The Prayer Chain**

In the *Gospel According to Matthew* we are offered some assurance: "Ask, and it will be given to you; search, and you will find; knock, and the door will be opened for you." Matthew 7:7 These words are both comforting and frustrating at times. It is a comfort to know that our needs, desires and longings may be met if only we ask, but it is frustrating when our queries are not answered as swiftly or directly as we might like. Still, the power of prayer is tremendous. Most of us maintain some sort of practice of prayer. Some have chosen to be a part of the Prayer Chain and promise to pray regularly for a special list of concerns.

The Prayer Chain is one aspect of our Pastoral Care program as, through prayer, we respond to the pastoral needs of the parish. The members of the group meet monthly on a Sunday following the 10:15AM service in order to check in and receive updates and we welcome new members at any time. If you wish to join the Prayer Chain please contact Abigail at [revabigail@christstmichaels.org](mailto:revabigail@christstmichaels.org) or (410-745-9076). Thank you!

### **Remember the Care Circle**

As you may know, Christ Church has an active Care Circle, made up of people who happily volunteer to offer tangible support to those in need through providing transportation and meals. If you or someone you know could benefit from the ministry of the Care Circle, please contact Joan Zwemer (401-745-9599) or the parish office (410-745-9076). We are always eager to help in any way that we can and can only do so when we are made aware of a need.

## MONTHLY SUBMISSION

### Winter Blast – Margie Steffens

Dressed appropriately in down jacket, gloves and cap, I step out smartly into the cold. The sun shines brightly, and although I see the thermometer registers 35 degrees, it looks like a perfect day for a walk. I draw a deep, cold breath and set out towards the ponds.

It was only a few minutes before the sky turned a sulky gray, and suddenly, like an enraged beast, I heard the wind behind me. Like steam escaping from a radiator it hissed around me, the cold air burning my cheek like the caress of fine sandpaper. This was a wind which set my eyes to tearing and had me fumbling in my coat pocket for a tissue to stop my nose from running. The gust passed on in front of me and I was looking up again into a clear blue sky, watching gulls diving and turning in the wind, flapping their wings against the onslaught.

For a while I walked on briskly, invigorated by the brightness and beauty of the day, but soon the beast was on me again, tearing at my hair, twisting my scarf and baring my naked neck. I managed to struggle about and wrap the scarf closer, as I battled for warmth.

As I rounded the corner by the woods, I encountered another gust. Like an impudent child, running from punishment, it rushed past me, and gathering a pile of leaves with icy fingers, it tossed them in my face.

The ponds had thawed a bit. A few ducks, and ubiquitous Canada geese were paddling about oblivious to the weather, but I was too cold now to lift my binoculars, so I trudged onward, face down now, pushing toward home. Finally, with gratitude, I reached the front door, and stepped into the warmth of my house. With the door closed, I could hear the wind howling outside, but now it did not matter, because soon I would be cuddled up with a furry dog and a cup of hot chocolate.



**Finances (as of January 31, 2010)**



**Income**

Current Month	\$ 106,557	“Good”
Budget YTD	84,496	
Current YTD	106,557	
Over/(Under) YTD	\$ 22,061	“Good”

**Pledges**

Current Month	\$ 92,746	“Good”
Budget YTD	76,150	
Current YTD	92,746	
Over/(Under) YTD	\$ 16,596	“Good”

**Expenses**

Current Month	\$ 45,271	“Fair”
Budget YTD	47,891	
Current YTD	45,271	
Over/(Under) YTD	(\$ 2,620)	“Good”

**Income less Expenditures**

Current Month	\$ 61,286	“Good”
Budget YTD	36,605	
Current YTD	61,286	
Surplus/(Deficit) YTD	\$ 24,681	“Good”

**Ministry Areas of Christ Church**

**CHRISTIAN FORMATION**

Adult Forum	Carl Widell
Adult Inquirers	Mark Nestlehutt
Church School	Lee Thomas
Youth Confirmation	Abigail Crozier Nestlehutt

**OUTREACH & WIDER MISSION**

Back to School Project	Gillian Whyman, Judy Sandground
Children’s Home Found	Nance DuPont, Dianne Shaw
Environmental Issues	Margie Steffens
Episcopal Relief & Dev.	Pamela McCloud
El Hogar Project	Ned McCall
Grants Committee	John Hunnicutt
Habitat for Humanity	John Hunnicutt
Honduran Dental Mission	Jim Campi
St. Michaels Food Bank	John & Nancy Masone
United Thank Offering	Carol Carlson

**PARISH & COMMUNITY LIFE**

Coffee Hour	Fritz Riedlin
Covenant Churches	Abigail Crozier Nestlehutt
Docent’s Guild	Joan Frey
Episcopal Church Women	Alice Utterback
Kitchen Committee	Mary Riedlin, Nancy Sipe
Layweeters	Kay Perkins
Lea Library	Robert & Marilyn Barrett
Lemonade/Cider in Hall	Cathy Mendenhall
Men’s Club	Leo Foulds
<i>Tidings</i> Newsletter	Kim Liberatore-Stolz
Welcoming Committee	Jim McCloud

**PASTORAL CARE**

Care Circle	Joan Zwemer
Eucharistic Visitors	Jessie Weddle
Flower Delivery	TBD
Knitting Group	Linda Spire
Prayer Chain	Abigail Crozier Nestlehutt
Stephen Ministry	Abigail Crozier Nestlehutt

**STEWARDSHIP**

**Clergy Liaisons: Clergy Team**

**Vestry Liaisons: John Booth, Robert Burger, Sal Simoncini & Carl Widell**

Annual Campaign	Carl Widell
Finance Committee	Robert Burger
Property	John Booth, Sal Simoncini

**WORSHIP & MUSIC**

Acolytes’ Guild	Lee Hamilton
Altar Guild	Helen Bower, Judy Hause
Choirs: Chancel	William Thomas
Handbell	Bernice Walk
Youth	William Thomas
Euch. Ministers & Readers	Chloe Pitard
Flower Guild	Nancy Besso
Greeters/Shepherds	Tom Mendenhall
Ushers	Robert Burger

**March Birthdays & Anniversaries**

- 3/2 Peg Orem, Roger Clark, Jackson McKay
- 3/3 Alice Utterback, Connie Lindeman
- 3/4 Charlene Woodard, Bill Magrath
- 3/6 Carol Clark, Joan Schneider
- 3/7 Margie Steffens
- 3/8 Lesley Moyer
- 3/9 Rick Morgan, Sarah Peterson
- 3/10 Margaret Naeny
- 3/11 Mary Ellen Olcese
- 3/12 Martha Austin
- 3/13 George Raitt, James Keating
- 3/14 John Loflin, Thomas Stevenson, Penny Rhine, Mary Garner
- 3/15 Lisa Rey
- 3/16 Louise Woods, Frances Maffitt
- 3/17 Geoff Garner
- 3/19 Gillian Lewis
- 3/21 Pat Janson
- 3/22 Marge Bundock, Judy Hause
- 3/23 Susan Armstrong
- 3/24 Bert Boon
- 3/27 Reilly O’Neill
- 3/29 Maye Soulsman, Anne Pilert, Thomas Stolz
- 3/30 Sid Smith, Karen Burger, John Masone

## Staff

The Rev. Mark S. Nestlehutt, *Rector*  
The Rev. Abigail Crozier Nestlehutt, *Associate Rector*  
The Reverend Mary Garner, *Assistant Rector*  
Mr. William R. Thomas, *Director of Music*  
Ms. Carol A. Osborne, *Parish Administrator*  
Mr. George E. Short *Sexton*  
Ms. Dominique P. Sturgis, *Nursery Director*

## Vestry

Robert Burger, *Senior Warden*  
Sherry Sutton, *Junior Warden*  
Ed Sipe, *Treasurer*  
Mary Ellen Olcese, *Registrar*

Jim McCloud 2011  
Sal Simoncini 2011  
Joan Zwemer 2011  
Unexpired Term 2011

John Booth 2012  
Philip Parkinson 2012  
Judy Sandground 2012  
Unexpired Term 2012

John Masone 2013  
Rick Morgan 2013  
Fritz Reidlin 2013  
Carolyn Wasdyke 2013

**RETURN SERVICE REQUESTED**

**CHRIST CHURCH  
ST. MICHAEL'S PARISH  
Newsletter Editor  
PO Box 5  
St. Michaels, MD 21663-0570**

**DATED MATERIAL**

NON-PROFIT ORG  
U.S. POSTAGE PAID  
Easton, MD  
Permit #160