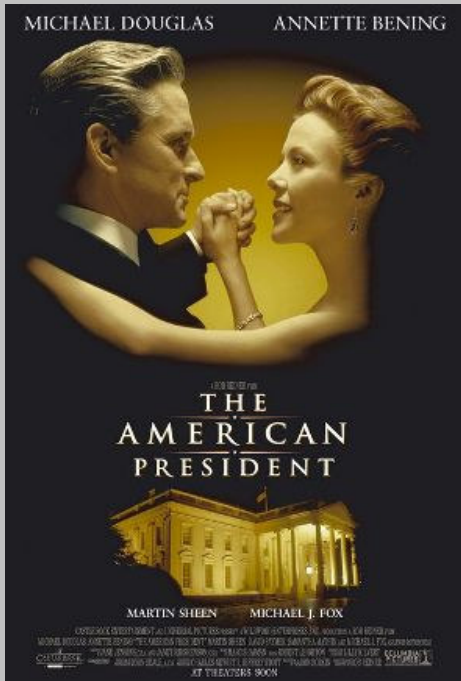


TIDINGS

The Newsletter of Christ Church – St. Michael’s Parish (Episcopal)

January 2009

“Friday Fun Night” Event: *Rector’s Choice Movie Night*



The American President (1995)

On **Friday, January 16th** beginning at 6PM, Etherton Hall will be transformed into a neighborhood movie theatre including popcorn and traditional cinema candy. This year—noting the upcoming Inauguration—the Rector has chosen the film *The American President* starring Michael Douglas and Annette Bening and rated PG-13. Please join us for this evening of neighborhood fun on a cold night! And children under 13 will be offered a G-Rated movie as well, *Horton Hears a Who*.

Please phone or email the Parish Office if you are planning to attend.

Annual Stewardship: *A New Year’s Update*

Last September, Christ Church launched its 2009 stewardship campaign with high hopes at our annual Harvest Dinner. The Stewardship Committee, led by Carl Widell, along with the Vestry had worked to discern the emerging and ongoing needs of the Parish and the enthusiasm was palpable. By the time of the stewardship ingathering on October 19th, however, much had changed in the national and global economies. Our stewardship goal of \$500,000 (which had represented a \$30,000 increase over 2008 pledges) was “downgraded” as pledges began trickling in—some reflecting notable reductions. The Finance and Stewardship chairs, along with the Wardens, Treasurer and Rector, began contemplating new estimates of pledges simply holding level at \$470,000 or realizing overall pledge reductions of up to 10% or \$50,000. The question on everyone’s mind was: Would Christ Church be better off than the many other churches, charitable and cultural organizations in the County? Fortunately, by mid-December when pledges reached \$435,000 we were feeling more optimistic—not about meeting our initial goal of \$500,000, but of avoiding serious cutbacks in programs and staffing. Based on trends from the past four years, an additional \$40-60,000 is pledged during the last two weeks of December and the month of January before our Annual Parish Meeting in February. Assuming these trends continue then Christ Church should be in strong financial shape this coming year. The Wardens, Vestry and Clergy thank you for your pledge of continued support for 2009.

Monthly Evensong at Christ Church Lessons & Carols for Epiphany Sunday, January 4th at 5PM

The Feast of Epiphany marks the official end of the Twelve Days of Christmas as we begin to witness how this infant Jesus, born in Bethlehem, is manifested as being God’s son. Please join the Chancel Choir for this lovely and contemplative service of lessons, anthems and hymns to mark the transition from Christmas into Epiphany. *Sparkling water & Sherry will be served following the service.*

Christ Church – St. Michael’s Parish
103 Willow Street, P.O. Box S
St. Michaels, MD 21663
Tel: 410-745-9076 Fax: 410-745-5760
e-mail: info@christstmichaels.org

Office Hours: 8AM - 4PM
 Weekly service schedule:
 Morning Prayer – 9AM Mondays through Fridays
 Healing Service – 10AM Wednesdays
Sunday Services: 8AM & 10:15AM

Submissions to the *TIDINGS* monthly parish newsletter are due on the
15th of the previous month

Please email items for publication to
kmliberatore42@yahoo.com
 or leave in newsletter editor’s mailbox
 located at the parish house

Editor: Kim Liberatore Stolz (410-745-6546)

A child shall lead them. Isaiah 11:6

In about the third grade, I started to sing in the junior choir at the church in my hometown where the custom was for the children to participate each Sunday at the second service. By eighth grade I was going to a different church in the city where I became an avid acolyte who served every week. Not surprisingly, I was one of those young people who was eager to read in church or take on whatever role the adults were willing to offer. Serving in worship has always been meaningful to me as a way to deepen and exercise my faith.

Each week we gather and together we all participate in the liturgy. Whether you are sitting in a pew, singing in the choir or standing in the chancel, you are a part of making worship happen at Christ Church. This month things will look a little different for one week. On Sunday, January 18th at 10:15 AM, young people will join adults in taking on most of the leadership roles in the service. In this way, we will all have the chance to witness the ministry of the young people in our midst, and our children and youth will have the opportunity to participate in ways that are normally, but not necessarily, reserved for adults.



As you may remember, a vestry subcommittee has been meeting to discuss the ways in which we minister to children and youth at Christ Church. Young people are a vital aspect of our community and there is much that we can do with and for them. At an Adult Forum presentation in November we introduced the idea of the Children’s Charter for the Church, which reminds us that the church is called to care for young people, minister to young people and appreciate the ministry of young people.

In an effort to more intentionally follow the Children’s Charter we are looking for new ways of appreciating the children in our midst. We have asked you to become more aware of the children and youth of Christ Church through prayer and by making an effort to meet one child and to learn his or her name. Youth Sunday will be another step in the process. I invite you to make a point of being in church on January 18th and of being supportive of our children and youth that day and following. We all benefit as we grow in our knowledge of one another.

— Abigail Crozier Nestlehutt



Looking to the New Year

The month of January often provides a respite in the life of the church. Christmas Day is behind us, the fog has lifted from the New Year's Eve festivities and while Epiphany is at hand, its celebratory aspects are lost on most of us. Thus, we have eight weeks between now and the beginning of Lent to live in ordinary time. The phrase "Ordinary Time" is reserved for the two long green seasons on the church's calendar: the *Season after the Epiphany* and the *Season after Pentecost*. From early January through late February we are in the *Season after the Epiphany*—a time of no major church feasts or other distractions. Therefore, this season provides a perfect time for reflection and evaluation.

The making and keeping of New Year's resolutions generally ends in frustration or abandonment. The gyms at the YMCA or at Cross Courts will be packed with members from January 1st through the end of the month, with noticeable declines every week thereafter. Eventually, we lose our zeal or the resolution seems less pressing as the year moves on. Occasionally, however, the resolution was of enough significance to hold our attention throughout the year and perhaps even beyond.

For the past several years at Christ Church, the parish has identified goals or priorities on the cover of the January *Tidings* and this year I'd like to revisit some of these past goals or priorities. In January of 2008 the initial themes and concerns were our environmental and economic stewardship of the buildings to evaluate our energy usage and carbon footprint. This resulted in new policies regarding heating and cooling cycles for the church building and replacing lights and monitoring devices used in the parish house. We also prioritized accessibility into our Parish House and, spurred by the Docent's Guild, by summer had added a new ADA parking pad, sidewalk and electric push panel door into Etherton Hall.

The previous January's cover focused on building and strengthening our newest pastoral care program, Stephen Ministries. Within the past two years, Christ Church has trained fourteen Stephen Ministers, each of whom support one or more parishioners with ongoing pastoral care.

In January of 2006, we had just dedicated our newly completed Parish House facility. The focus on January's cover was to re-assess the long-stated goals from our 2002 Parish Profile which included: (1) providing a ministry that is attractive to the population of the community by developing family-friendly services and creating active, thriving programs for children and youth; (2) responding to community needs by expanding parish activities to include cultural and social events; and (3) enlivening the parish education programs for children, youth and adults. These were the priorities from January 2004, as well with the 2005 cover focusing on the \$2 million capital campaign that was meant to ensure that we would have the space and resources to commit to new programming.

While so much of our energy during the past three years has focused on outreach and wider mission with our dental clinic, work trips to Honduras and Mississippi, and renewed commitment to Habitat for Humanity and the local public schools, the consistent theme that has been articulated over time has been our desire to build up better and stronger programs for our children and youth and to support families with young children. All of this is done in conjunction with expanding our pastoral care and community life programs for our seniors and others. New times, however, bring on new challenges especially in the areas of outreach and wider mission. For 2009 we are looking to use our Parish House as a temporary shelter for Talbot County's homeless population. Economists and others note that 2009 may be a year unlike those of the recent past. The economy seems more fragile, a new President will enter the White House and our material resources may be tighter. Nevertheless, with challenges come opportunities and our goal as Christians is to ascertain and discern what God is asking us to do each and every day as faithful bearers of the light of Christ.

PARISH ANNOUNCEMENTS



The Talbot Interfaith Shelter Update – Pamela McCloud

Christ Church, partnering with Union United Methodist Church, will be hosting the Talbot Interfaith Shelter, February 15th through 22nd. It may take on an additional week as the need arises. Christ Church, St Michael's Parish is one of 10 faith communities (six acting as host sites and four providing additional volunteers) currently committed to this effort. In this first year, it will act as a host site for one or two weeks to accommodate up to five guests. The shelter will operate from 6PM to 7AM. All guests will be carefully screened by the Department of Social Services prior to being admitted to the program, and must agree to abide by strict "house rules" while in residence. A volunteer site coordinator will manage the program and continuous site supervision will be provided. In addition to meals prepared by volunteers (dinner, breakfast and a take away lunch), guests will have time for leisure activities and be provided with shower facilities and laundry services. Transportation to and from St. Michaels will be arranged and links with other social services agencies will be established.

We are recruiting volunteers to assist in various areas--especially with evening and overnight supervision. The shelter is geared this first year to providing a winter haven for homeless families and individuals in participating congregations' facilities. There are many different ways to volunteer, for example: preparing meals, providing transportation or acting as a shelter supervisor for the evening or overnight. No special skills are needed as training will be provided. The desire to provide some comfort to those in need is the only prerequisite. To make this effort successful, we need the participation of the entire St. Michael's community. Volunteering time or services, food or supplies is a way for us to live out our commitment to "love thy neighbor as thy self." If you can help in this new initiative, please call or email Pamela McCloud, 410-745-3576, pmccloud@mac.com or Gillian Whyman, 410-690-4502, Gillian@cheeseandport.com.

141st Convention of the Episcopal Diocese of Easton: "Listening..."

On February 27th & 28th, parish delegates and clergy from throughout the Diocese will gather at the Hyatt in Cambridge for Diocesan Convention. In addition to the business of the Diocese, there will be workshops and various opportunities for worship. The Convention Eucharist is scheduled for Saturday morning at Christ Church in Cambridge with the Right Reverend Errol Brooks, Bishop of the Diocese of the NorthEastern Caribbean and Aruba preaching. Convention will be voting on whether to enter into a formal Companion Diocese relationship with Bishop Brooks's Diocese this year. In addition to our parish clergy—Mark, Abigail and Paul—our parish delegates are: Linda Norris, Mary Ellen Olcese and John Scofield. Vestry delegate is Carl Widell. Anyone may attend part or all of Convention. Registration forms may be found on the hallway table in the Parish House or on the Diocesan website: dioceseofeaston.org.

Annual Parish Meeting: Monday, February 2nd

On Monday, February 2nd the Vestry is hosting the 2009 Annual Parish Meeting for Christ Church – St. Michael's Parish. In addition to electing new wardens, vestry members and delegates and alternates to Diocesan Convention, we will review our financial statements from 2008 as well as the operating budget for 2009. The theme for the evening, however, is to highlight some of our newer ministries and to celebrate some of our recent accomplishments. The Vestry will provide the drinks and entrée, the rest is up to us:

| A-H | Side Dish | I-P | Salad | Q-Z | Dessert |
|-----|-----------|-----|-------|-----|---------|
|-----|-----------|-----|-------|-----|---------|

Annual Meeting Schedule

| | |
|---------|-------------|
| 5:30 PM | Evensong |
| 6:00 PM | Social Time |
| 6:30 PM | Dinner |
| 7:30 PM | Meeting |

GROUP & CLUB NEWS



December Vestry Highlights – Alison Sanford

Over recent months, the annual stewardship campaign has been underway and the 2009 budget has been in the forefront of vestry member's minds. Bob Holden, chair of the Finance Committee, introduced the initial draft of the budget in August and has presented additional budget drafts at every vestry meeting since. Each month, pledges have been updated and budgets adjusted to reflect the projected decrease in pledge income. This has led to great concern on the part of the vestry and clergy. However, it seems that we underestimated the unfaltering dedication and generosity of this parish. Total pledges have increased from \$118,616 on October 14th to \$339,015 on November 6th to \$425,603 on December 9th. We have not yet reached our 2009 goal, but the projected decrease is less than expected and pledges continue to come in. Mark opened the vestry meeting with a passage from Matthew 6 which reminded us very appropriately "...seek first his kingdom and his righteousness.....do not be anxious about tomorrow, for tomorrow will be anxious for itself. Let the day's own trouble be sufficient for the day".

The vestry heard updates on the work of the welcoming committee, children & youth committee, Mark and Abigail's sabbatical, and the Talbot Interfaith Shelter. The nominating committee presented the slate of nominees to be voted upon at the 2009 Annual Parish Meeting on February 2nd. These nominees have the full support of the vestry.

Christopher Whyman - Senior Warden, one year term

Alison Sanford - Junior Warden, one year term

John Booth, Phil Parkinson, Judy Sandground, and Sherry Sutton – vestry, three year term

The vestry meeting concluded with Night Prayer, led by Ann Roe.

Docents' Guild – Linda Makosky

As the docent's annual fall meeting opened in Etherton Hall on November 8, the group gathered around two tables, coffee mugs in hand. We began by introducing ourselves, because in our midst was a very new member, Melissa Malcolm. She had come to the meeting to get acquainted with her fellow docents. With great enthusiasm, Melissa described her enjoyment in docent service. She expressed her appreciation for her experienced partner, Fran Brown. Her docents handbook provided good background and answers to visitors questions. It was "a treat to be in church," she said. People respond to the "Welcome" signs we place at the entry walk and doorway. One day she was especially pleased to meet a woman who was soon to be married here and had brought her mother and mother-in-law to show them the church and learn some of its history. Thanks to Melissa for sharing her joy in this rewarding mission.

The August guild roster listed 45 regular docents, most of whom serve with spouses or other partners, and eight substitutes. Every season, a few docents move on to other parish activities and some retire from duty. There is a continuing need for new volunteers. Our schedulers, Faye Shannahan (410-745-9375) and Sue Kilmon (410-745-3141) would welcome a call from anyone interested in joining the guild. Faye and Sue will gladly provide the handbook and training. This quiet season is an ideal time to start.

GROUP & CLUB NEWS Cont...



Attention all Women of Christ Church – Sheila Vaughan

The executive board of ECW thanks all of the women of Christ Church for their hard work, dedication, and generosity in making our Christmas luncheon and Bazaar so successful.

Approximately 95 women from the various churches in St. Michaels enjoyed a delicious meal and companionship at our luncheon. Special thanks to Peggy Orem and Pat Martin and their committees for a job well done. Afterwards, more than 100 people filled the Church for a stellar performance of the Easton High School Chamber Singers under the direction of Chris Noyes. Thank you to Lynn Freeburger for coordinating the visit. What a beautiful way to welcome the season.

The Christmas Bazaar was very successful again this year, due to the hard work of the committee chairs and their helpers. At "press time" we had brought in approximately \$5750.00 -- within \$100.00 of last year. The amount is significant considering that only one tourist bus came into town for the event rather than the three from last year. The committee chairs thank all their helpers for their donations of time and talents. We thank the following organizers of the Bazaar: Peggy Orem: Chair; Barbara Smith and Karen Orem: Country Store; Elizabeth Simoncini and Pat Martin: Bake Table; Ginny MacLeod and Pat Holmes: Treasures and Jewelry; Karen Burger, Raffle Tickets; Louise Woods, Greens; Carol Carlson and Karen Orem: Angel Tree; Mary Thomas and Jessie Weddle: gift baskets.

A special thank-you is given to Bud Keiser for making and painting a new Mitten Tree for the needy. Members of the knitting group made mittens, caps and scarves which were hung on the tree and were available to those who visited the Food Pantry before Christmas.

If you would like to receive ECW email updates please send Sheila Vaughan your email address at svaughan@atlanticbb.net

The Men's Group – Leo Foulds

The Group will meet on January 10, 2009, at Christ Church, Etherton Hall, at 9AM. After breakfast and a short prayer, there will be a wide screen presentation of the 2008 Edinburgh Military Tattoo. Massed Pipes and Drums with drill teams and performers from around the world will entertain us.

As we are going into our second part of the annual membership fund raiser, if you have not already contributed, please bring a \$50.00 check or cash towards five "free" breakfasts and the scholarship fund. Non-members wishing to attend, please call Leo Foulds prior to January 7th for details, as we do not want guests to go home hungry!!

Happy New Year!

REACHING OUT



Let Us Give Thanks: From the Food Pantry - Nancy Masone

We extend our many thanks to all the parishioners and assorted community organizations that have donated to the Food Pantry in the last few months. We have received very generous monetary donations and groceries galore.

A fellow parishioner and local hunter, Ned McCall, recently offered venison to the pantry. The idea of having a freezer in the pantry had been discussed for many months and, with this offer, it finally made a lot of sense. Now a 5 cubic foot freezer is in the pantry ready to hold venison and assorted other items. As soon as we began discussing the need to purchase a freezer, a parishioner called and made a special family donation to cover the full cost. It is now installed and in use. Several families have decided to forego exchanging gifts and, instead, donate to a local charity, including the food pantry.

The additional donations have eased the pressure of increased demands to the pantry. On Sunday December 14th, I peeked and there were boxes and bags of food lining the floor. The following organizations have had food drives recently:

Talbot Bank

Girl Scout Troop #1412

Boy Scout Troop #741

Tilghman On Chesapeake Homeowners Association

Tilghman Elementary School had a contest run by Mrs. Asmussen for which class could raise the most food.

Graul's Market for the donation of turkeys

YMCA, St. Michael's Branch

Many volunteers donated their personal time to contribute to the running of the pantry:

Rite 13 (middle school) class, and their parents Cathy Mendenhall, Molly Taylor, Linn Ong, Barbara Smith, Kim Kerrigan, Pamela McCloud, Betsy Taylor, Marsha Johnson, Shelly Maykuth, Rob Masone, and Fred & Linda Tompkins. And a special thanks to Mark, Abigail and Paul for their support and encouragement.

Hymn 581:

Where charity and love prevail

There God is ever found;

Brought here together by Christ's love

By love are we thus bound.

CHRISTIAN FORMATION



Book of the Month – Robert K. Barrett

Wallis, Jim, *The Great Awakening: Reviving Faith and Politics in a Post-Religious Right America*, New York, 2008, 336pp, 269.09 WAL

Jim Wallis is a well-known evangelical preacher and founder of Sojourners. This is his ninth book. In an earlier book, *God's Politics*, he scolds both the right and the left saying “the right gets it wrong and the left doesn't get it.” In *The Great Awakening*, he gives the reader a thumbnail sketch of evangelism in the United States including the ‘Great Awakening’ in the 1740s before the American Revolution, the Abolitionist Movement before the Civil War, and the Civil Rights Movement of the 1960s. He believes, however, that evangelism went astray when it was co-opted in the first two elections of the 21st century by the Republican Party. He faults Bush and his Republican supporters for the assumption that the United States represents good fighting evil. Wallis now believes that evangelism is changing its focus from war, abortion and gay marriage to the issues of poverty, hunger and global warming.

This confirms for Wallis the belief that ‘great awakenings’ occur periodically at crucial periods in our history to propel us forward for the common good. He shows that a revival is happening as a people of faith and moral conviction seek common ground for change -- change from extreme and needless poverty, global warming and environmental degradation, terrorism and endless cycles of violence, racism, human trafficking, and shortcomings in health care and education. These changes can be achieved by cooperation at the political center. Politics at each level must be informed by justice for all and by benefits to the community and not to individuals.

A striking feature of Jim Wallis is that he eschews the parochial and sees that Christians of all denominations contribute to promoting the faith. Evangelism has gotten a bad name from the many pastors who have promoted right-wing causes and forgotten the bed-rock Christian message. Jimmy Carter wrote a foreword for this book, and many others have offered words of praise. The book has an introduction, notes and an extensive index.

Wallis, Jim, *God's Politics: Why the Right gets it Wrong and the Left Doesn't Get it*, Harper Collins, New York, 2006, 432pp, 261.7WAL

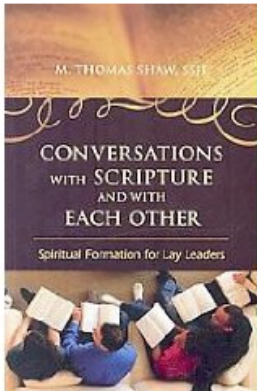
The Adult Christian Formation Group – Doris Fink

Welcome back to the Adult Forum! We look forward to having you join us each week. Following is our January schedule.

| | |
|------------|---|
| January 4 | "Meet and Greet Sunday" |
| January 11 | "The House of the Future" presented by Pamela Widell |
| January 18 | "The Green Design" presented by Larry Sanford |
| January 25 | "The Ethics Involved in Artificial Intelligence" presented by Roger Clark |

Coffee Hour at the parish house begins at 9AM. The Forum presentations begin promptly at 9:15AM and conclude by 9:58AM. We'd love to have you join us and feel free to bring a friend as well. Everyone is welcome! We invite all adults to experience these unique Adult Forum sessions.

CHRISTIAN FORMATION CONT...



Lenten Book Group:

Conversations with Scripture and with One Another
M. Thomas Shaw, SSJE

During the Season of Lent (February 25 – April 4) parishioners are invited to join in a book discussion group of Bishop Tom Shaw's Conversations with Scripture and with One Another. The group will meet on Monday afternoons from 1 – 2:30 PM in the Lea Library beginning on March 2nd and ending on March 30th.

Tom Shaw, a monastic and the bishop of the Episcopal Diocese of Massachusetts, asks the question “What are the challenges you face in your congregation and your own spiritual life?” He notes that one’s answer may differ depending upon the person’s primary association with the church. Wrestling with functions or programs may take over time for our own spiritual development. How do we balance the two roles and responsibilities and why should we? Shaw states that we maintain our allegiance to the parish because it is where the face of God is revealed to us. Books are available on line through Amazon.com or may be ordered through Harrison Street Books in Easton: ISBN 13: 978-0-7425-6279-0. Please notify Carolyn in the Parish Office to register, carolyn@christstmichaels.org or 410-745-9076.

A May Pilgrimage to Palestine & Israel

Christ Church’s former Rector, Erv Brown, who retired in 2002, along with Harriet Taylor from the Ministry of Money will be leading a pilgrimage to the Holy Land this spring, May 1-14. Ministry of Money, a ministry of the Church of the Savior in Washington, D.C., has been taking groups to the Middle East since 1998. These pilgrimages have provided life-changing experiences for the participants, including Erv Brown and his wife, Tish. Not only will the group visit the holy sites that have significance for Christians, Jews and Muslims, but they also will visit places not on most tours. This pilgrimage offers relationship-building opportunities with Palestinians and Israelis, and our speakers and unique resource people give us a very broad perspective on the terribly difficult issues confronting the region today. For more information, please contact Erv Brown at 410-567-3750 or the Cathedral of the Incarnation / 4 East University Parkway / Baltimore, Maryland 21218. Registration deadline is March 8th 2009.

New to the Episcopal Church or Simply Need a Tune-up? The February Inquirers Class is for you!

If you are new to Christ Church, the Episcopal Church, or even Christianity in general, you are strongly encouraged to attend the Inquirers Class. During February, we will provide an opportunity for people exploring the faith and connection to Christ Church to come together for discussion and conversation. This is an excellent opportunity for adults who have recently joined, or are considering joining, Christ Church, as well as for those considering baptism, confirmation or reception into the Episcopal Church. We will meet in the Lea Library on Thursday evenings February 5th, 12th, 19th and 26th from 7-8:30 PM. Our primary texts will be *The Book of Common Prayer (1979)* and *Welcome to the Episcopal Church* by Chris Webber. For more information or to register, please telephone or email Carolyn in the Parish Office, 410-745-9076 or Carolyn@christstmichaels.org or speak with Mark.



Finances (as of November 30, 2008)

Income

| | | |
|------------------|-----------|------|
| Current Month | \$49,715 | Fair |
| Budget YTD | \$505,790 | |
| Current YTD | \$513,782 | |
| Over/(Under) YTD | \$8,002 | Good |

Pledges

| | | |
|------------------|-----------|------|
| Current Month | \$42,051 | Good |
| Budget YTD | \$407,882 | |
| Current YTD | \$412,528 | |
| Over/(Under) YTD | \$4646 | Good |

Expenses

| | | |
|------------------|-----------|------|
| Current Month | \$37,192 | Good |
| Budget YTD | \$504,071 | |
| Current YTD | \$494,629 | |
| Over/(Under) YTD | \$<9442> | Good |

Income less Expenditures

| | | |
|-----------------------|----------|------|
| Current Month | \$12,522 | Good |
| Budget YTD | \$1719 | |
| Current YTD | \$19,163 | |
| Surplus/(Deficit) YTD | \$17,444 | Good |

January Birthdays & Anniversaries

- 1 Christina Wilson
- 2 Paula Statkiewicz
- 3 Nancy Hunter, Milton Hall, Zoe Marie Thomas,
Mary Riedlin, Jean Thomson
Bob & Kay Perkins(anniv), George & Margie Steffens(anniv)
- 4 Joan Frey, Betsy Wilson, Jane Engel
Katya Widell
- 5 Linda Blythe, John Bond
- 6 Eugenia Newberg, Lane Michael Clark
- 7 Christopher Whyman, Laurence Driggs
- 8 Mary Thomas
- 10 Marion Shannahan,
- 11 Sandra Clark Schauber, Mary Delashmutt
- 12 Isaiah Whyman
- 13 Mark & Abigail Nestlehutt (anniv)
- 14 Carol McCanna
- 15 Jim Valliant
- 19 June Snyder, Eleanor Shriver Magee
- 20 Merideth Buxton, Lee Aldrich
- 21 Charlie & Betsy Wilson (anniv)
Tom Newnam
- 23 Philip Webster, Nicholas Rey
- 24 John T. Shannahan, Jr.
- 25 Bill & Louise Woods (anniv.)
- 26 Barbara Smith
Roger & Peg Tyler (anniv)
- 27 Christa Johnson
Philip & Irmey Webster (anniv)
- 28 Jane Jansen, Elizabeth Foulds
- 29 Mike Sheridan, Maxine Millar, Marion Lewis
- 30 Bonnie Bless, Dick Tanczos

Ministry Areas of Christ Church

CHRISTIAN FORMATION

| | |
|--------------------|----------------------------|
| Adult Forum | Doris Fink |
| Adult Inquirers | Mark Nestlehutt |
| Church School | Ann Roe |
| Disciples Program | Christopher Whyman |
| Youth Confirmation | Abigail Crozier Nestlehutt |

OUTREACH & WIDER MISSION

| | |
|--------------------------|---------------------------------|
| Back to School Project | Gillian Whyman, Judy Sandground |
| Children's Home Found | Nance DuPont, Dianne Shaw |
| Community Grants | Paul D'Zmura |
| Commun. Youth Initiative | Mark Nestlehutt |
| Episcopal Relief & Dev. | Pamela McCloud |
| El Hogar Project | Margie Steffens |
| Habitat for Humanity | Martha Austin, Ted Taylor |
| Honduran Dental Mission | Jim Campi |
| St. Michaels Food Bank | John & Nancy Masone |
| United Thank Offering | Carol Carlson |

PARISH & COMMUNITY LIFE

| | |
|------------------------|----------------------------|
| Layweeters | Kay Perkins |
| Lemonade/Cider in Hall | TBD |
| Coffee Hour | Fritz Riedlin |
| Covenant Churches | Abigail Crozier Nestlehutt |
| Docent's Guild | Joan Frey |
| Episcopal Church Women | Peggy Orem, Sheila Vaughan |
| Gardeners | Kay Perkins |
| Kitchen Committee | Mary Riedlin, Nancy Sipe |
| Men's Club | Leo Foulds |
| Tidings Newsletter | Kim Liberatore-Stolz |
| Welcoming Committee | Jim McCloud |
| Lea Library | Robert & Marilyn Barrett |

PASTORAL CARE

| | |
|----------------------|----------------------------|
| Care Circle | Gillian Whyman |
| Eucharistic Visitors | Jessie Weddle |
| Flower Delivery | Molly Malkus |
| Knitting Group | Linda Spire |
| Pastoral Visitors | Abigail Crozier Nestlehutt |
| Prayer Chain | Doris Fink |
| Stephen Ministry | Abigail Crozier Nestlehutt |

STEWARDSHIP

| | |
|-------------------|------------------------------|
| Annual Campaign | Carl Widell |
| Finance Committee | Bob Holden |
| Property | Craig English, Sal Simoncini |

WORSHIP & MUSIC

| | |
|---------------------------|-------------------------|
| Acolytes' Guild | Lee Hamilton |
| Altar Guild | Helen Bower, Judy Hause |
| Choirs: Chancel | Bill Thomas |
| Handbell | Bernice Walk |
| Youth | Bill Thomas |
| Euch. Ministers & Readers | Chloe Pitard |
| Greeters/Oblation Bearers | Tom Mendenhall |
| Shepherds | Tom Mendenhall |
| Ushers | Bob Burger |

Staff

The Rev. Mark S. Nestlehutt, *Rector*
The Rev. Abigail Crozier Nestlehutt, *Associate Rector*
The Rev. Paul D. Winters, *Assistant*
Mr. William R. Thomas, *Director of Music*
Ms. Carolyn Coyle Finch, *Secretary*
Mr. Tim Clayton, *Sexton*
Ms. Dominique P. Sturgis, *Nursery Director*

Vestry

Christopher Whyman, *Senior Warden*
Alison Sanford, *Junior Warden*
Ed Sipe, *Treasurer*
Jessie Weddle, *Registrar*

| | |
|----------------|----------------|
| Bob Burger | Ann Roe |
| Michael Clark | Sal Simoncini |
| Craig English | Clyde Sisk |
| Bob Holden | Sheila Vaughan |
| John Hunnicutt | Carl Widell |
| Jim McCloud | Joan Zwemer |

CHRIST CHURCH – ST. MICHAEL’S PARISH
Newsletter Editor
PO Box S
St. Michaels, MD 21663

| |
|--|
| NON-PROFIT ORG U.S. POSTAGE PAID Permit #1 |
|--|

-----*DATED MATERIAL*-----

ADDRESS CHANGE SERVICE REQUESTED